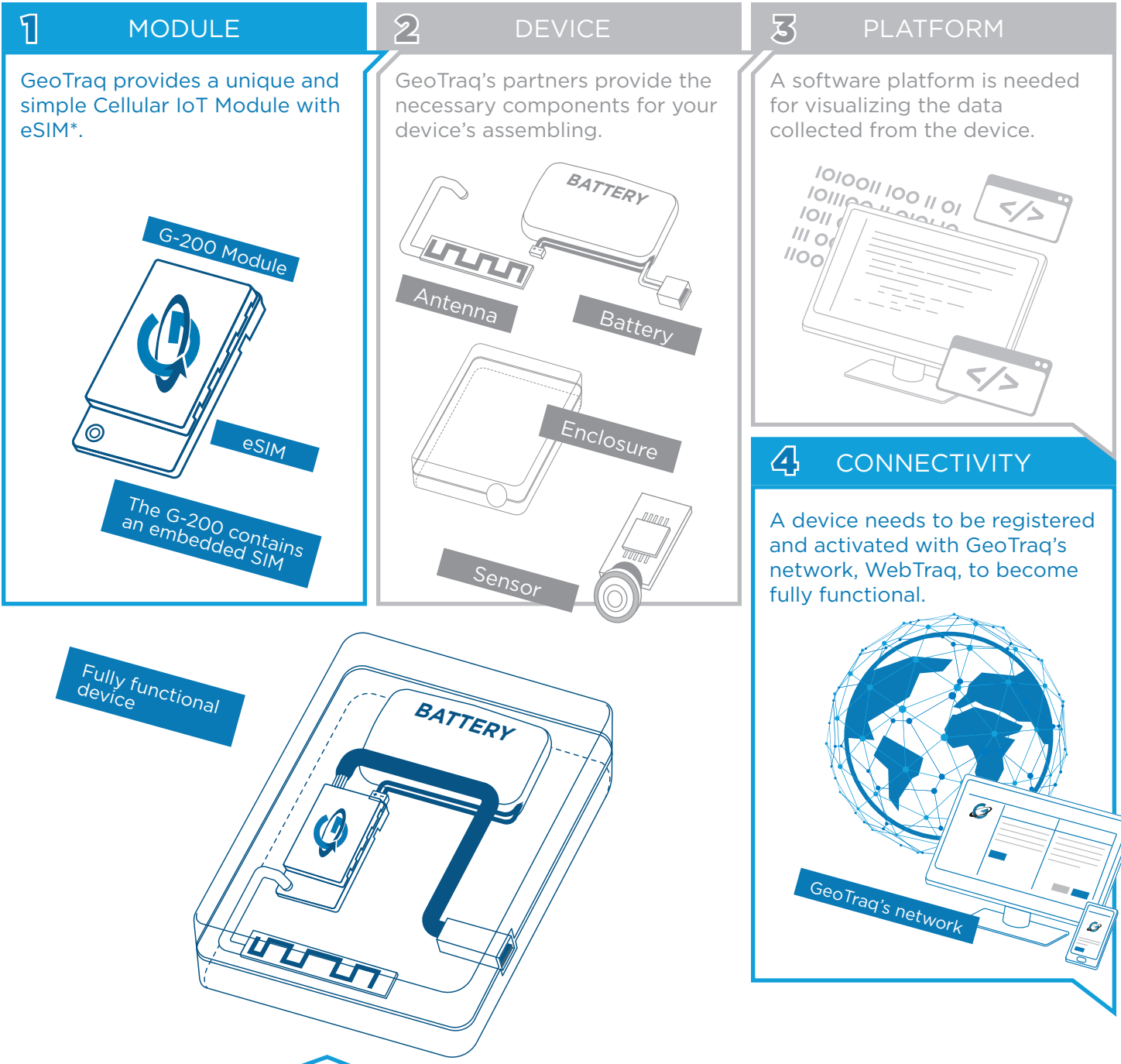


FROM MODULE TO DEVICE

A fraction of time and cost

GeoTraq's plug and play modules are a fraction of the cost and time to deploy; potentially saving you hundreds of thousands of dollars. The 4 easy steps to deployment are listed below.



GeoTraq provides a unique and simple Cellular IoT Module with eSIM*.

GeoTraq's partners provide the necessary components for your device's assembling.

A software platform is needed for visualizing the data collected from the device.

A device needs to be registered and activated with GeoTraq's network, WebTraq, to become fully functional.

A fully functional GeoTraq module can monitor things like location, storage, temperature and equipment condition. With Tier-1 global coverage capability through the GSM network, businesses can keep track of assets around the world with the right data at the right time.